



TIMELESS
LUXURIOUS
LIFESTYLE





CONFIGURED TO GIVE YOU THAT EXTRA EDGE IN QUALITY LIVING

Strikingly beautiful, the lavishly proportioned apartments are available in a configuration of 2, 2+1, 3 and 4-bedroom and penthouses.



A REFLECTION OF TIMELESS ARCHITECTURE

Mirroring your success in life, this home speaks volume of your ambition, your status and your stand. Arrestingly stylish, it commands high-living standards. 24-storey high, it provides spacious comfort with attention to the highest level of excellence and demanding standards of quality. Appreciation for distinguished living is what matters nothing less.







Artist's impression

LUXURIOUS 'GARDEN IN THE SKY' CONCEPT

Everyone has a balcony. The point is, is there a view magnificent enough to boot. Open your doors to be greeted by beautiful springing flowers from the private garden in the sky. Coupled with the luxury of natural light from the balcony, memory of a childhood long gone is evoked.



Artist's impression





LUXURIOUS HEIGHT FOR PURE INDULGENCE

Sleep in a completely relaxing mode. One that could only be conjured by great ventilation and a sense of spaciousness. Rest assured that everything is being taken care of, as nothing is compromised. Enjoy the airiness of the bedroom and feel the warmth of the timber flooring every morning: evident details of the undivided attention to every layout.



After submission



Artist's impression

A DREAM THAT COMES ALIVE

Someone used to say, the kitchen is where the heart belongs. And how the spaciousness fills every heart with warmth. Or how the built-in cabinetry enhanced the whole look and feel. Here, is where a dream begins. A dream where smiles and laughter fill the air and the aroma of the delicious dishes makes your stomach jump with joy.



Artist's impression



SHEER RELAXATION WITH QUALITY FITTINGS

You will be spending more time than ever in the stunning bathroom where a big sunken bathtub snugly positioned, pampers you like a royalty. Our interior designer got carried away, so you should best enjoy it.





EXCLUSIVE RECREATIONAL PLEASURES

Splash your heart out or sweat it out. Lounge by the pool or join the kids for a walk on the landscaped deck. Chilling out on the entertainment pavilions and spa alcoves will bring immense pleasure as you catch up with your family. The smile, the contented look and innocent laughter are precious memories that will be etched on the mind and engraved in the heart.

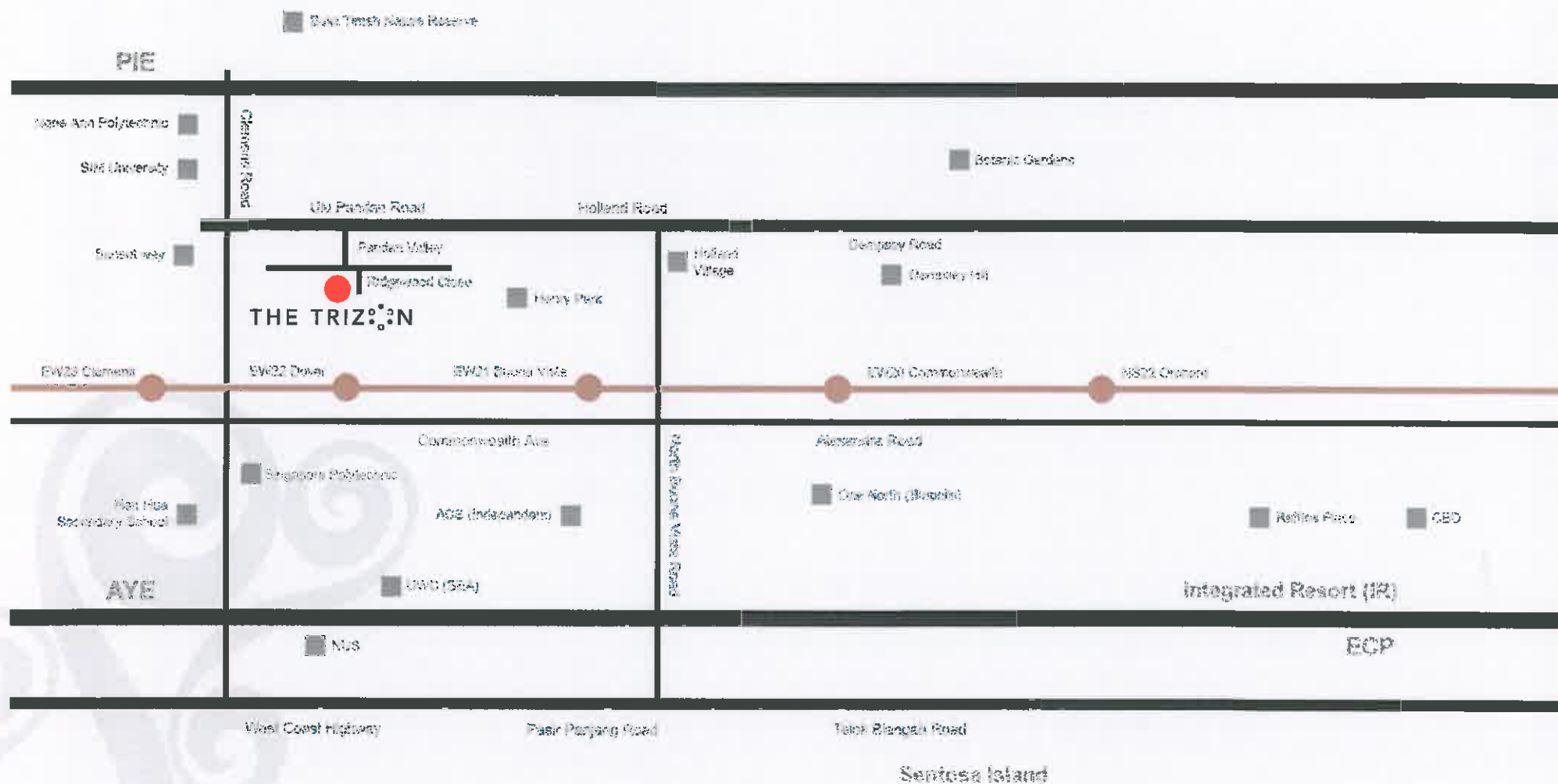




THE 'LIVE' DOCUMENTARY ON NATURE

No words could aptly describe the feeling. The building of momentum in the heart as the eyes bear witness to nature's extravagance, surreal and compelling. For the spellbinding vista that spreads across the greens and the sea, is truly an amazing sight to behold. Even in glimpses. Revel in the luxurious sense of light that speaks volume of a blissful perfection.

It happens everywhere, but you get the best seat.



SITE PLAN & LEGEND

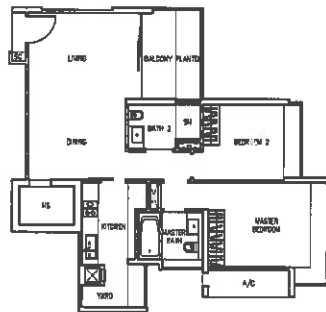
- | | |
|---|---------------------------------------|
| 1 Main Entrance Drop-Off Plaza | 18 Clubhouse Entrance Plaza |
| 2 Water Wall Feature | 19 Function Deck with BBQ Station |
| 3 Lap Pool | 20 Landscape Spa Alcoves with Jacuzzi |
| 4 Children's Pool | 21 Infinity Reflective Pool |
| 5 Children's Waterplay area | 22 Meditation Deck |
| 6 Sundeck | 23 Jogging Track |
| 7 Entertainment Pavillion with Private Pool | 24 Outdoor Fitness Station |
| 8 Tennis Court | 25 Children's Playground |
| 9 Multi-purpose Court | 26 Clubhouse |
| | I) Multi-purpose function room |
| | II) Gymnasium |
| | III) Steam Rooms |
| | IV) Male & Female Changing Rooms |
| | V) Management Office |



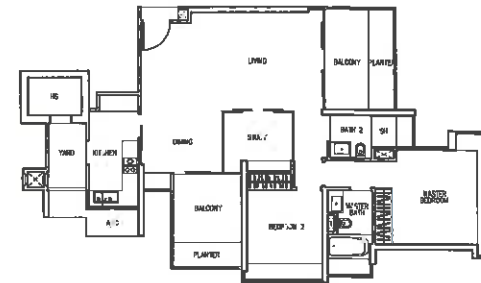
Type A1
2-Bedroom
97 sq m / 1044 sq ft
Block 8
#04-10 to #21-10



Type A2
2-Bedroom
94 sq m / 1012 sq ft
Block 8
#04-11 to #21-11
#04-14 to #21-14



Type B1
2+1 Bedroom
125 sq m / 1346 sq ft
Block 2
#03-04 to #22-04



Type B2
2+1 Bedroom
111 sq m / 1195 sq ft
Block 8
#03-12 to #22-12



The above plans are subject to change as may be approved by the relevant authorities. Areas are approximate and subject to final survey. Plans are not to scale.

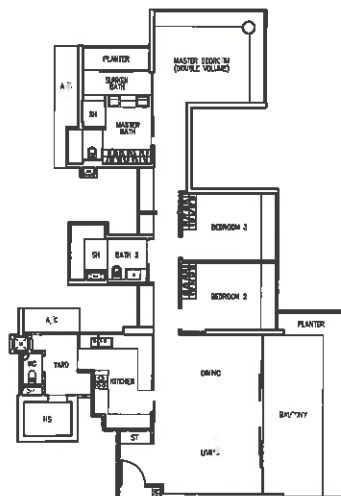
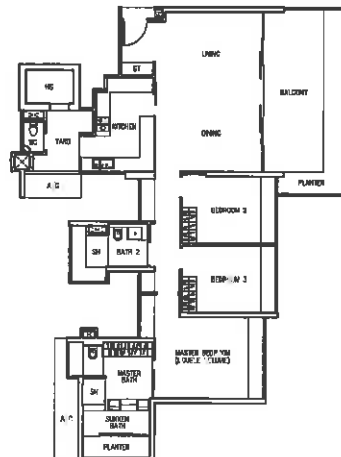
The above plans are subject to change as may be approved by the relevant authorities. Areas are approximate and subject to final survey. Plans are not to scale.

Type C1a

3-Bedroom
176 sq m / 1894 sq ft
(inclusive of 11 sq m / 118 sq ft of void area)

Block 2 (Odd storeys)
#05-03 to #21-03

Block 6 (Odd storeys)
#05-05 to #19-05
#05-08 to #19-08



Type C1b

3-Bedroom
192 sq. m. / 2067 sq. ft.
(inclusive of 19 sq m / 205 sq ft of void area)

Block 2 (Even storeys)
#06-03 to #20-03

Block 6 (Even storeys)
#06-05 to #20-05

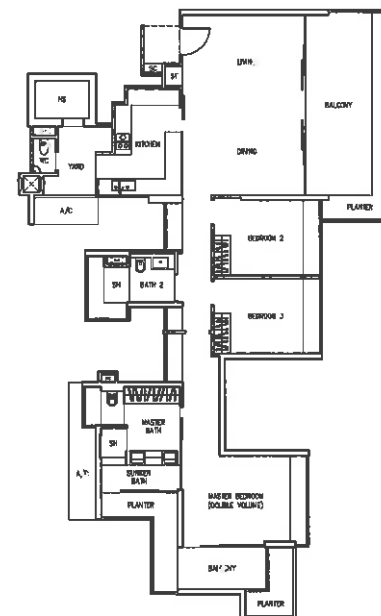


The above plans are subject to change or amendment as approved by the relevant authority. Areas are approximate measurements and subject to final survey. Plans are not to scale.

Type C1c

3-Bedroom
156 sq m / 2110 sq ft
(inclusive of 16 sq m / 172 sq ft of void area)

Block 6 (Even storeys)
#06-08 to #18-08

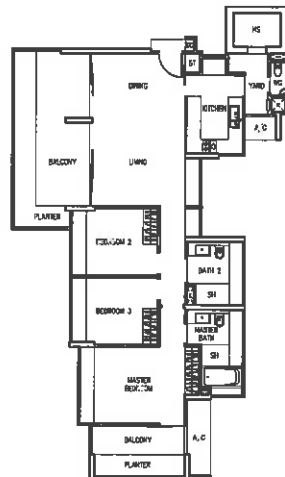


The above plans are subject to change or amendment as approved by the relevant authority. Areas are approximate measurements and subject to final survey. Plans are not to scale.

Type C2

3-Bedroom
144 sq m / 1550 sq ft

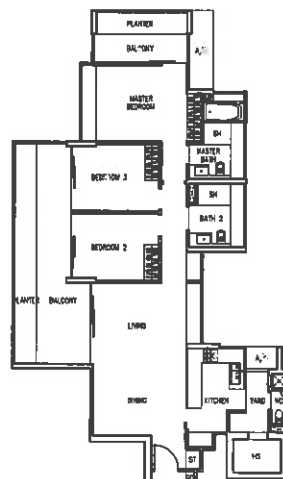
Block 8
#03-13 to #22-13



Type C3

3-Bedroom
148 sq m / 1593 sq ft

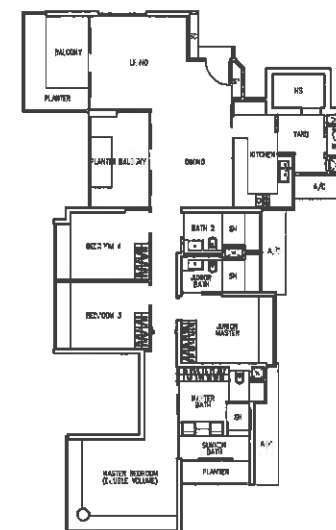
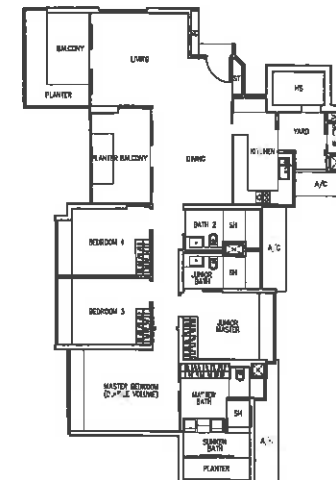
Block 8
#04-09 to #21-09



Type D1a

4-Bedroom
187 sq m / 2013 sq ft
(including of 11 sq m / 118 sq ft of void area)

Block 2 (Crdl storeys)
#05-01 to #21-01



Type D1b

4-Bedroom
202 sq m / 2174 sq ft
(including of 19 sq m / 205 sq ft of void area)

Block 2 (Evan storeys)
#02-01 to #20-01

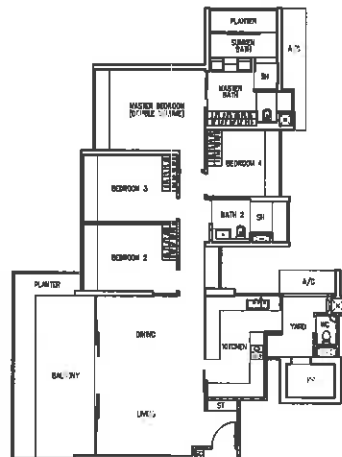
The above plan is subject to change as may be approved by the relevant authority. Areas are approximate measurements and subject to final survey. Plans are not to scale.

The above plan is subject to change as may be approved by the relevant authority. Areas are approximate measurements and subject to final survey. Plans are not to scale.

Type D2a

4-Bedroom
182 sq m / 1959 sq ft
(Inclusive of 11 sq m / 113 sq ft of void area)

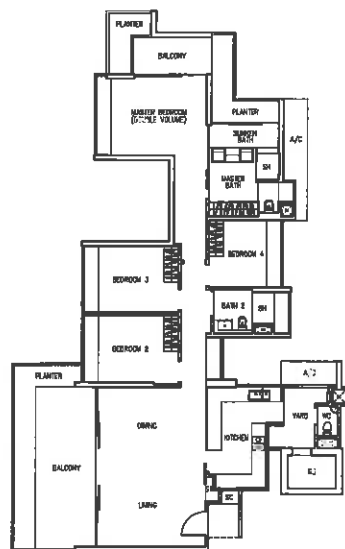
Block 2 (Odd storeys)
#05-02 to #21-02



Type D2b

4-Bedroom
203 sq m / 2185 sq ft
(Inclusive of 16 sq m / 172 sq ft of void area)

Block 2 (Even storeys)
#06-02 to #18-02

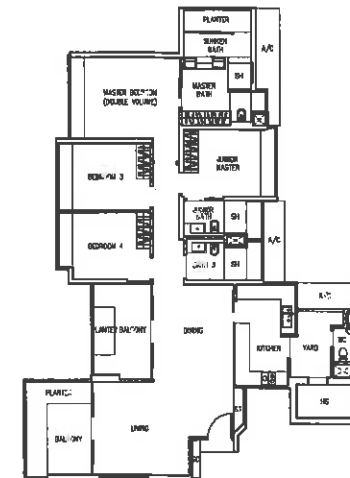


The above plans are subject to change and may be approved by the relevant authority. Areas are approximate measurements, and subject to final survey. Plans are not to scale.

Type D3a

4-Bedroom
190 sq m / 2045 sq ft
(Inclusive of 11 sq m / 116 sq ft of void area)

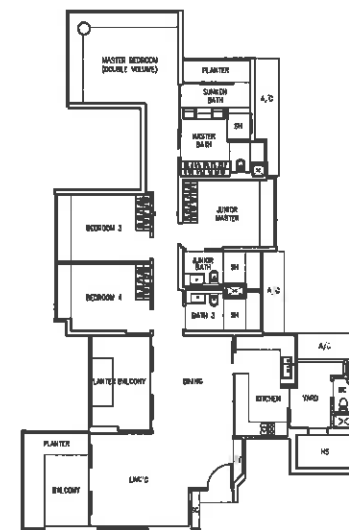
Block 6 (Odd storeys)
#05-06 to #19-06



Type D3b

4-Bedroom
206 sq m / 2207 sq ft
(Inclusive of 19 sq m / 205 sq ft of void area)

Block 6 (Even storeys)
#02-06 to #20-06

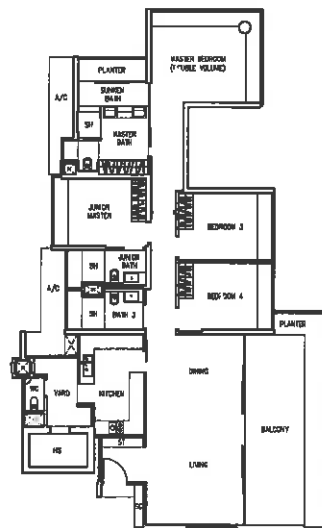
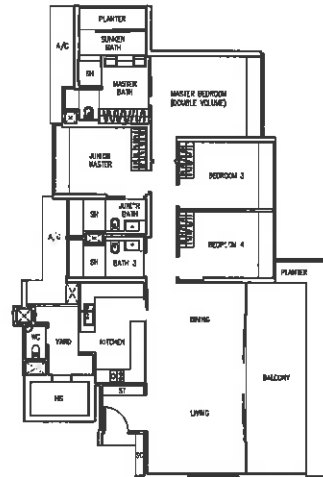


The above plans are subject to change and may be approved by the relevant authority. Areas are approximate measurements, and subject to final survey. Plans are not to scale.

Type D4a

4-Bedroom
200 sq m / 2153 sq ft
(inclusive of 11 sq m / 118 sq ft of void area)

Block 6 (Odd storeys)
#05-07 to #19-07



Type D4b

4-Bedroom
215 sq m / 2314 sq ft
(inclusive of 19 sq m / 205 sq ft of void area)

Block 6 (Even storeys)
#02-07 to #20-07

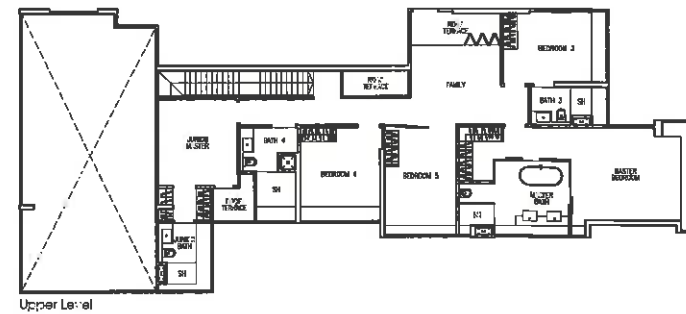


The above plans are subject to change. As may be approved by the relevant authorities. Areas are approximate measurements and subject to final survey. Plans are not to scale.

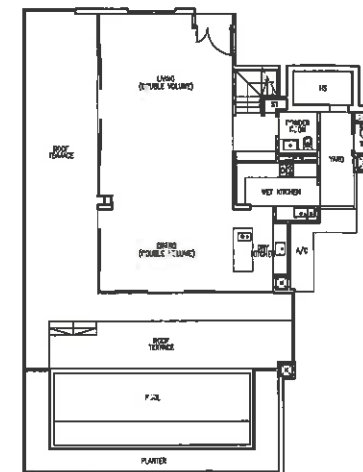
Type PH1

464 sq m / 4994 sq ft
(inclusive of 65 sq m / 700 sq ft of void area)

Block 2
#23-01



Upper Level



Lower Level

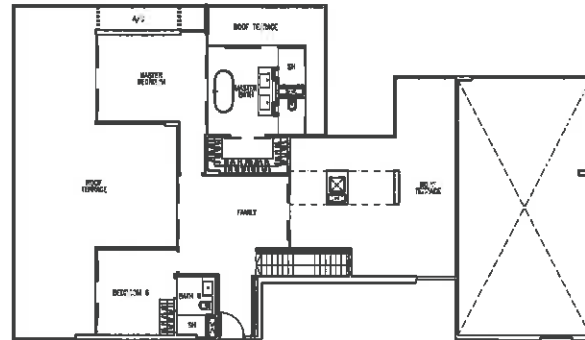


The above plans are subject to change. As may be approved by the relevant authorities. Areas are approximate measurements and subject to final survey. Plans are not to scale.

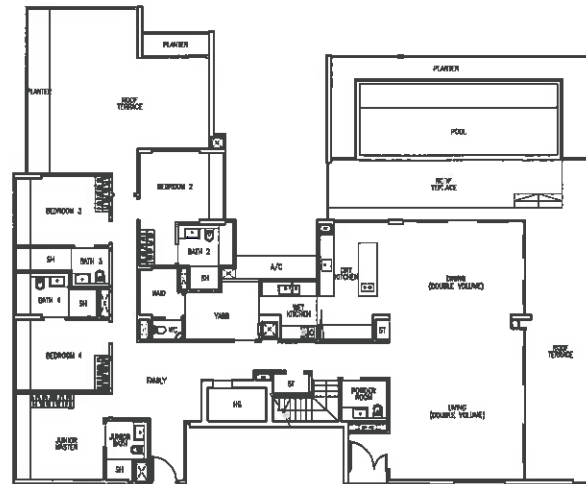
Type PH2

658 sq m / 7083 sq ft
(inclusive of 62 sq m / 667 sq ft of void area)

Block 2 #23-03



Upper Level



Lower Level

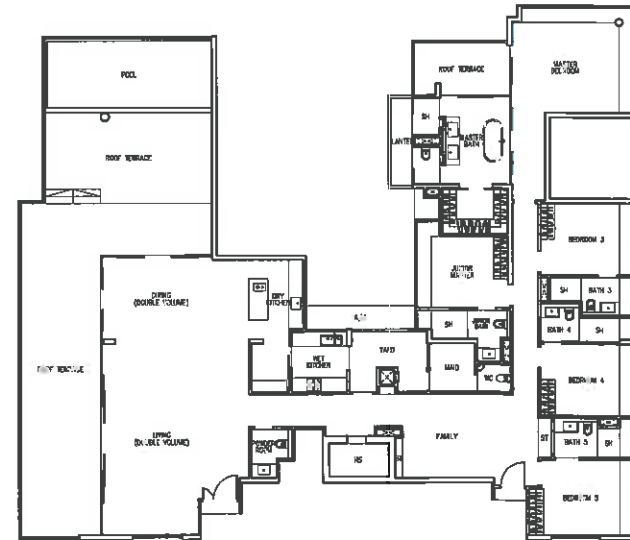


The above plans are subject to change as per the approval by the relevant authority. Areas are approximate measurements and subject to final survey. Plans are not to scale.

Type PH3

474 sq m / 5102 sq ft
(inclusive of 69 sq m / 740 sq ft of void area)

Block 6 #22-06

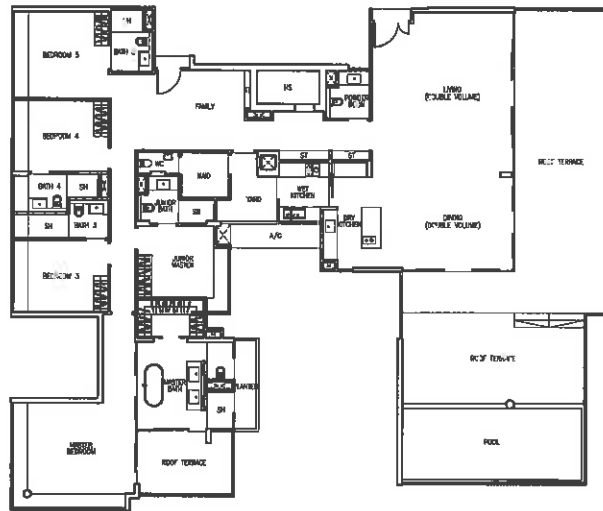


The above plans are subject to change as per the approval by the relevant authority. Areas are approximate measurements and subject to final survey. Plans are not to scale.

Type PH4

457 sq m / 4919 sq ft
(inclusive of 65 sq m / 700 sq ft of void area)

Block 6
#22-08

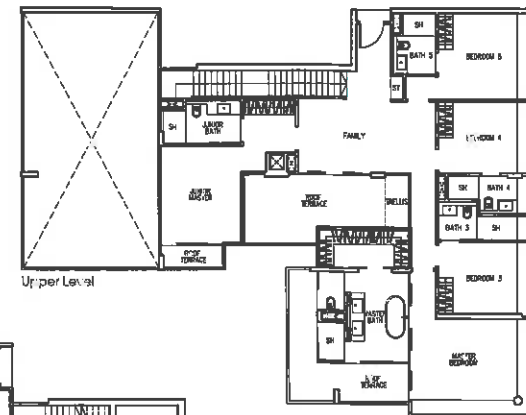


The above plans are subject to change without approval by the relevant authority. Areas are approximate measurements and subject to final survey. Plans are not to scale.

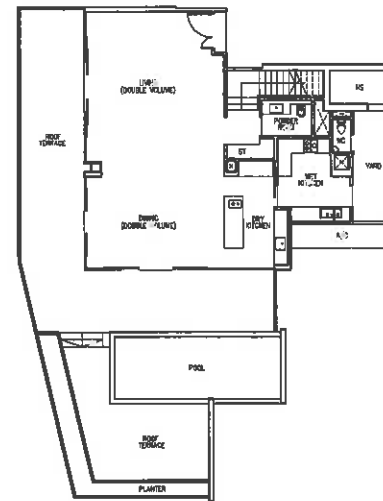
Type PH5

425 sq m / 5328 sq ft
(inclusive of 63 sq m / 678 sq ft of void area)

Block 6
#23-05



Upper Level



Lower Level

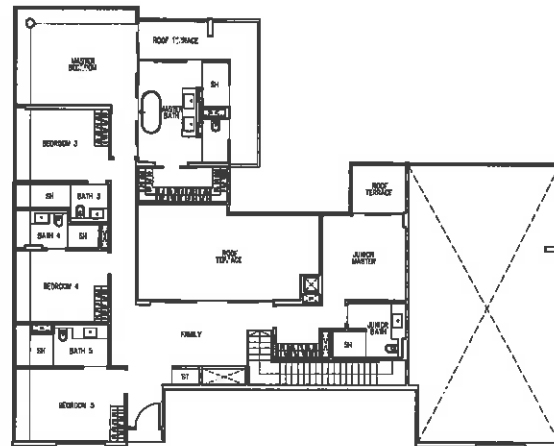


The above plans are subject to change without approval by the relevant authority. Areas are approximate measurements and subject to final survey. Plans are not to scale.

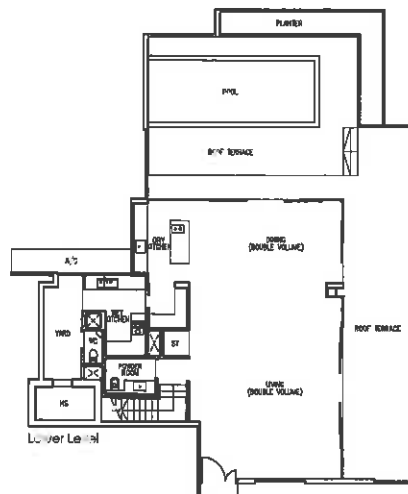
Type PH6

533 sq m / 5737 sq ft
(inclusive of 74 sq m / 797 sq ft of void area)

Block 6
#23-07



Upper Level



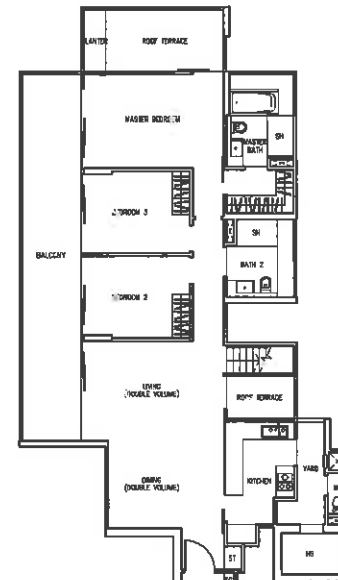
Lower Level



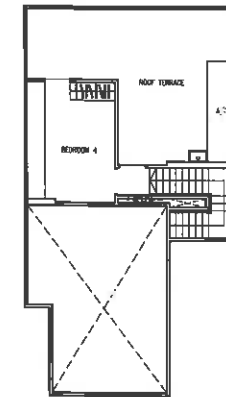
Type PH7

238 sq m / 2562 sq ft
(inclusive of 29 sq m / 312 sq ft of void area)

Block 8
#22-09



Lower Level



Upper Level



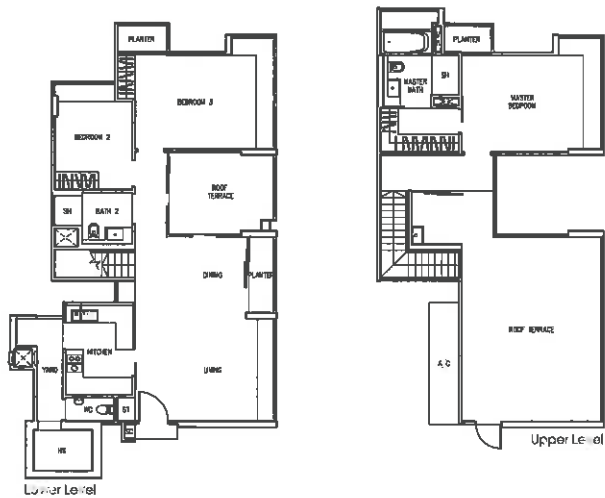
The above plans are subject to change and may be approved by the relevant authority. Areas are approximate measurements and subject to final survey. Plans are not to scale.

The above plans are subject to change and may be approved by the relevant authority. Areas are approximate measurements and subject to final survey. Plans are not to scale.

Type PH8

196 sq m / 2097 sq ft
(including of 10 sq m / 108 sq ft of void area)

Block 8
#22-10

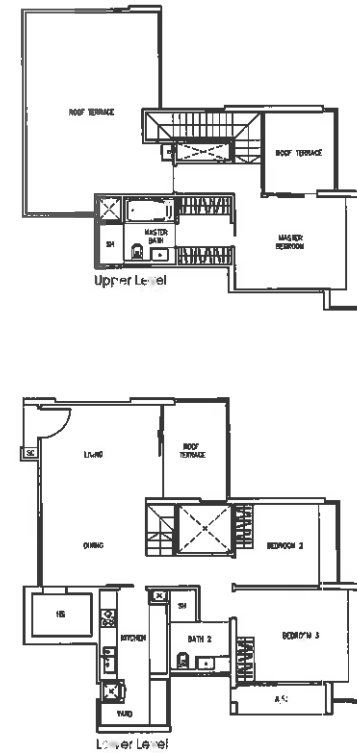


The above plans are subject to change as may be approved by the relevant authority. Areas are approximate measurements and subject to final survey. Plans are not to scale.

Type PH9

165 sq m / 1776 sq ft

Block 8
#22-11

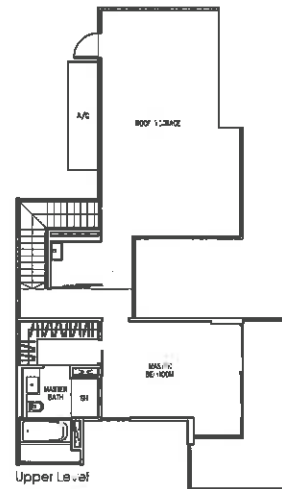
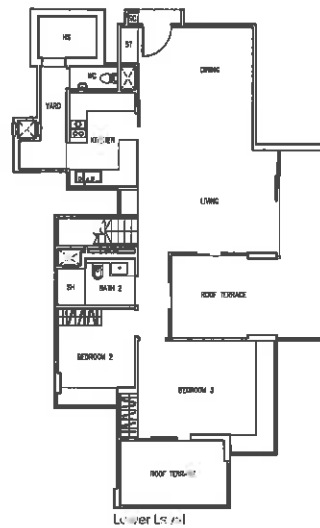


The above plans are subject to change as may be approved by the relevant authority. Areas are approximate measurements and subject to final survey. Plans are not to scale.

Type PH10

227 sq m / 2443 sq ft
(inclusive of 10 sq m / 109 sq ft of void area)

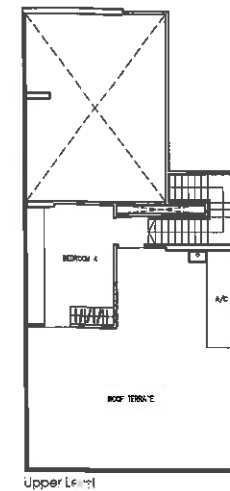
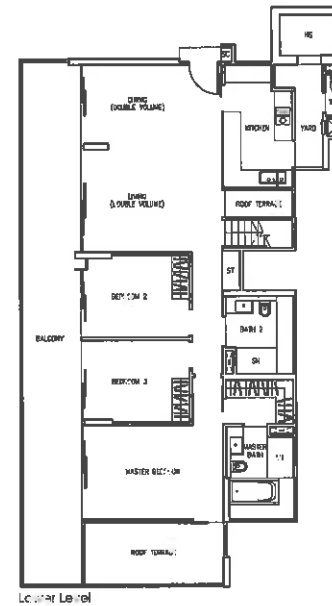
Block 8
#23-12



Type PH11

271 sq m / 2917 sq ft
(inclusive of 31 sq m / 334 sq ft of void area)

Block 8
#23-13



The above plans are subject to approval by the relevant authority. Areas are approximate measurements and subject to final survey. Plans are not to scale.

The above plans are subject to approval by the relevant authority. Areas are approximate measurements and subject to final survey. Plans are not to scale.



SINGAPORE LAND LIMITED

Singapore Land Limited (SingLand) was incorporated in 1963 as the first public listed property company. The company embarked on a major expansion exercise during the earlier year when it acquired, reconstructed and sold Marina House, completed Shing Kwan House and developed Clifford Centre.

The Company has been known to develop some of Singapore's finest and best known commercial landmarks such as SGX Centre, Singapore Land Tower, UIC Building, The Gateway and Stamford Court.

In the fast-paced retail industry, SingLand has proven itself to be in the forefront with highly successful developments such as Marina Square and West Mall.

The Company's uncompromised focus on impeccable standards is clearly visible in the good number of distinctive upmarket residential properties that include The Paterson, Stevens Loft in prime Orchard Road vicinity, One Amber in the popular East Coast area and The Sixth Avenue Residences in the prestigious Bukit Timah residential enclave.



Specifications Of the Building

1. **FOUNDATION**
As per the approved drawings.
2. **SUPERSTRUCTURE**
Reinforced concrete frame.
3. **WALLS**
(a) External - Reinforced concrete with a common day brick.
(b) Internal - Reinforced concrete with a common day brick.
4. **FLOOR**
Reinforced concrete with a common day brick.
5. **CEILING**
Reinforced concrete with a common day brick.
6. **DOORS**
(a) Main Entrance: Reinforced concrete with a common day brick.
(b) Kitchen: Reinforced concrete with a common day brick.
(c) Bathroom: Reinforced concrete with a common day brick.
(d) Bedroom: Reinforced concrete with a common day brick.
(e) Living Room: Reinforced concrete with a common day brick.
(f) Dining Room: Reinforced concrete with a common day brick.
(g) Study: Reinforced concrete with a common day brick.
(h) Hallway: Reinforced concrete with a common day brick.
(i) Staircase: Reinforced concrete with a common day brick.
(j) Terrace: Reinforced concrete with a common day brick.
7. **ROOF**
Reinforced concrete with a common day brick.
8. **PAVING**
(a) Main Entrance: Reinforced concrete with a common day brick.
(b) Kitchen: Reinforced concrete with a common day brick.
(c) Bathroom: Reinforced concrete with a common day brick.
(d) Bedroom: Reinforced concrete with a common day brick.
(e) Living Room: Reinforced concrete with a common day brick.
(f) Dining Room: Reinforced concrete with a common day brick.
(g) Study: Reinforced concrete with a common day brick.
(h) Hallway: Reinforced concrete with a common day brick.
(i) Staircase: Reinforced concrete with a common day brick.
(j) Terrace: Reinforced concrete with a common day brick.
9. **INTERIOR FINISHES**
(a) Walls: Plaster and paint.
(b) Ceilings: Plaster and paint.
(c) Floors: Tiles.
(d) Windows: Frames and glass.
(e) Doors: Frames and hardware.
(f) Kitchen: Cabinetry and appliances.
(g) Bathroom: Cabinetry and fixtures.
(h) Bedroom: Bed and wardrobe.
(i) Living Room: Sofa and coffee table.
(j) Dining Room: Dining table and chairs.
(k) Study: Desk and chair.
(l) Hallway: Coat closet and shoe rack.
(m) Staircase: Handrails and balustrade.
(n) Terrace: Paving and landscaping.
10. **ELECTRICAL INSTALLATION**
As per the approved drawings.
11. **TELECOMMUNICATIONS**
As per the approved drawings.
12. **MECHANICAL INSTALLATION**
As per the approved drawings.
13. **PAVING**
(a) Main Entrance: Reinforced concrete with a common day brick.
(b) Kitchen: Reinforced concrete with a common day brick.
(c) Bathroom: Reinforced concrete with a common day brick.
(d) Bedroom: Reinforced concrete with a common day brick.
(e) Living Room: Reinforced concrete with a common day brick.
(f) Dining Room: Reinforced concrete with a common day brick.
(g) Study: Reinforced concrete with a common day brick.
(h) Hallway: Reinforced concrete with a common day brick.
(i) Staircase: Reinforced concrete with a common day brick.
(j) Terrace: Reinforced concrete with a common day brick.

14. **PAVING**
As per the approved drawings.
15. **INTERIOR FINISHES**
(a) Walls: Plaster and paint.
(b) Ceilings: Plaster and paint.
(c) Floors: Tiles.
(d) Windows: Frames and glass.
(e) Doors: Frames and hardware.
(f) Kitchen: Cabinetry and appliances.
(g) Bathroom: Cabinetry and fixtures.
(h) Bedroom: Bed and wardrobe.
(i) Living Room: Sofa and coffee table.
(j) Dining Room: Dining table and chairs.
(k) Study: Desk and chair.
(l) Hallway: Coat closet and shoe rack.
(m) Staircase: Handrails and balustrade.
(n) Terrace: Paving and landscaping.
16. **ELECTRICAL INSTALLATION**
As per the approved drawings.
17. **TELECOMMUNICATIONS**
As per the approved drawings.
18. **MECHANICAL INSTALLATION**
As per the approved drawings.
19. **PAVING**
(a) Main Entrance: Reinforced concrete with a common day brick.
(b) Kitchen: Reinforced concrete with a common day brick.
(c) Bathroom: Reinforced concrete with a common day brick.
(d) Bedroom: Reinforced concrete with a common day brick.
(e) Living Room: Reinforced concrete with a common day brick.
(f) Dining Room: Reinforced concrete with a common day brick.
(g) Study: Reinforced concrete with a common day brick.
(h) Hallway: Reinforced concrete with a common day brick.
(i) Staircase: Reinforced concrete with a common day brick.
(j) Terrace: Reinforced concrete with a common day brick.

ELECTRICAL SCHEDULE

ITEM	UNIT TYPE											
	A1	A2	B1	B2	C1	C2	C3	D1	D2	D3	D4	
	(3 100W)	(3 100W)	(2+1 100)	(2+1 100)	(3 100W)	(3 100W)	(3 150W)	(4 100)	(4 100W)	(4 100W)	(4 100W)	
LIGHTING POINT	9	11	14	13	16	14	14	16	14	17	16	
13A SWITCHED SOCKET OUTLET	16	17	21	21	21	21	21	25	25	25	25	
13A SWITCHED SOCKET OUTLET FOR WASHING MACHINE	1	1	1	1	1	1	1	1	1	1	1	
13A SWITCHED SOCKET OUTLET FOR DRYER	1	1	1	1	1	1	1	1	1	1	1	
AIRCON ISOLATOR	2	2	2	2	3	3	3	3	3	3	3	
SCV OUTLET	3	4	5	5	5	5	5	6	6	6	6	
TELEPHONE OUTLET	3	4	5	5	5	5	5	6	6	6	6	
COOKER HOOD POINT	1	1	1	1	1	1	1	1	1	1	1	
COOKER HOB POINT	1	1	1	1	1	1	1	1	1	1	1	
ELECTRIC OVEN POINT	1	1	1	1	1	1	1	1	1	1	1	
BUILT-IN FRIDGE POINT	1	1	1	1	1	1	1	2	2	2	2	
BUILT-IN DISHWASHER POINT	1	1	1	1	1	1	1	1	1	1	1	
AUDIO INTERCOM UNIT	1	1	1	1	1	1	1	1	1	1	1	
BELL PUSH C/W BELL POINT	1	1	1	1	1	1	1	1	1	1	1	

ITEM	UNIT TYPE										
	PH1	PH2	PH3	PH4	PH5	PH6	PH7	PH8	PH9	PH10	PH11
	10 BATH	10 BATH	10 BATH	10 BATH	10 BATH	10 BATH	10 BATH	10 BATH	10 BATH	10 BATH	10 BATH
LIGHTING POINT	35	43	32	30	37	38	32	23	18	17	21
13A SWITCHED SOCKET OUTLET	34	42	34	34	34	34	25	25	21	21	21
13A SWITCHED SOCKET OUTLET FOR WASHING MACHINE	1	1	1	1	1	1	1	1	1	1	1
13A SWITCHED SOCKET OUTLET FOR DRYER	1	1	1	1	1	1	1	1	1	1	1
AIRCON ISOLATOR	5	6	5	5	5	5	5	5	4	4	4
SCV OUTLET	8	10	8	8	8	8	6	6	5	5	5
TELEPHONE OUTLET	8	10	8	8	8	8	6	6	5	5	5
COOKER HOOD POINT	1	1	1	1	1	1	1	1	1	1	1
COOKER HOB POINT	2	2	2	2	2	2	1	1	1	1	1
ELECTRIC OVEN POINT	1	1	1	1	1	1	1	1	1	1	1
BUILT-IN FRIDGE POINT	2	2	2	2	2	2	2	2	2	2	2
BUILT-IN DISHWASHER POINT	1	1	1	1	1	1	1	1	1	1	1
AUDIO INTERCOM UNIT	1	1	1	1	1	1	1	1	1	1	1
BELL PUSH C/W BELL POINT	1	1	1	1	1	1	1	1	1	1	1

Note: All quantities are subject to change without notice.

SINGAPORE LAND LIMITED

Copyright © 2016 Singapore Land Limited. All rights reserved. This document is the property of Singapore Land Limited and is not to be reproduced, stored in a retrieval system, or transmitted in any form or by any means, electronic, mechanical, photocopying, recording, or by any information storage and retrieval system, without the prior written permission of Singapore Land Limited.