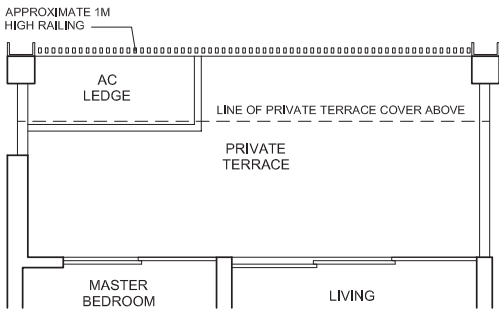
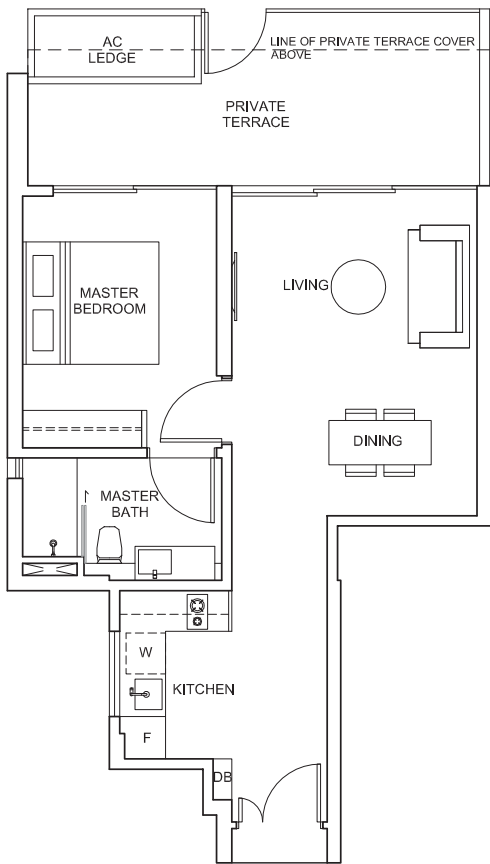


1-BEDROOM SUITE

TYPE AP1a
69 sq.m. / 743 sq.ft
BLOCK 14
#02-24



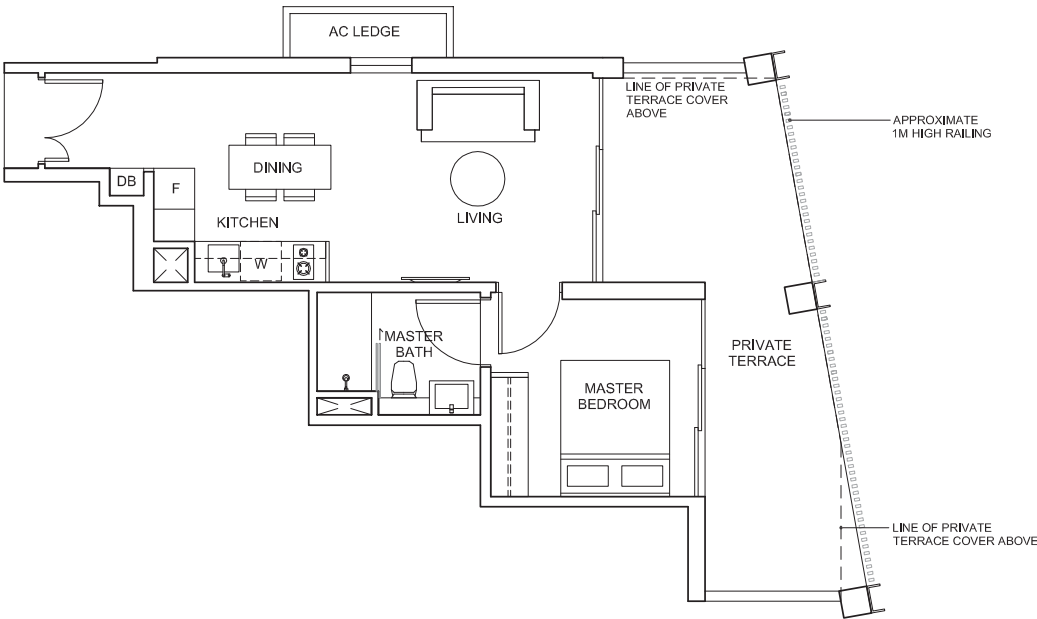
TYPE AP1
66 sq.m. / 710 sq.ft
BLOCK 12
#02-22



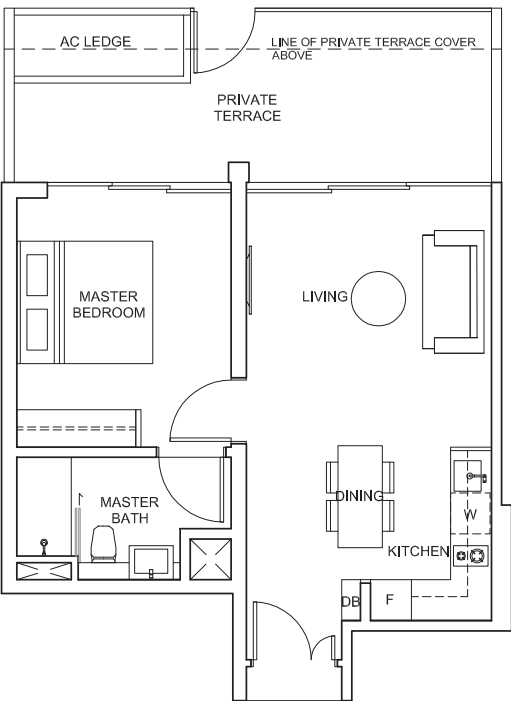
SIZES, QUANTITIES AND SPACING FOR THE RAILING AS INDICATED ARE FOR ILLUSTRATION ONLY AND MAYBE VARIED IN ACTUAL CONSTRUCTION ACCORDING TO THE ARCHITECT'S DISCRETION AND / OR AS REQUIRED BY RELEVANT AUTHORITIES.

1-BEDROOM SUITE

TYPE AP2
60 sq.m. / 646 sq.ft
BLOCK 12
#02-19



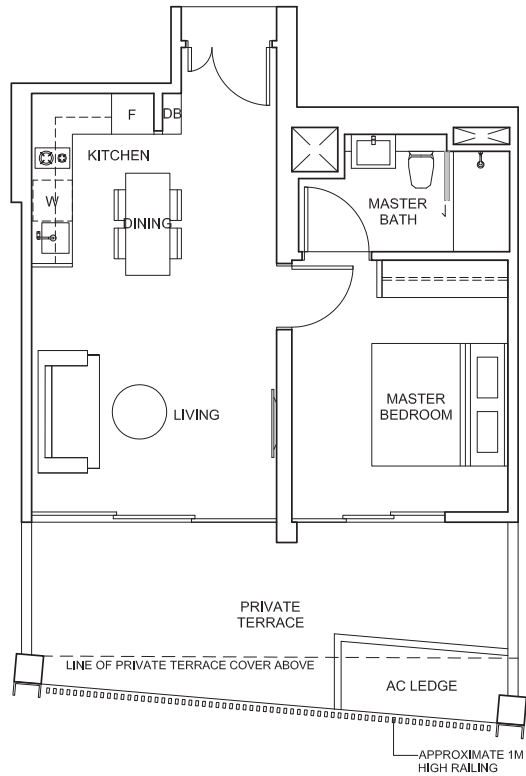
TYPE AP3
64 sq.m. / 689 sq.ft
BLOCK 12
#02-17



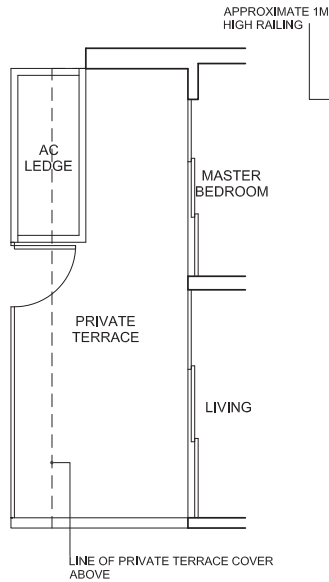
SIZES, QUANTITIES AND SPACING FOR THE RAILING AS INDICATED ARE FOR ILLUSTRATION ONLY AND MAYBE VARIED IN ACTUAL CONSTRUCTION ACCORDING TO THE ARCHITECT'S DISCRETION AND / OR AS REQUIRED BY RELEVANT AUTHORITIES.

1-BEDROOM SUITE

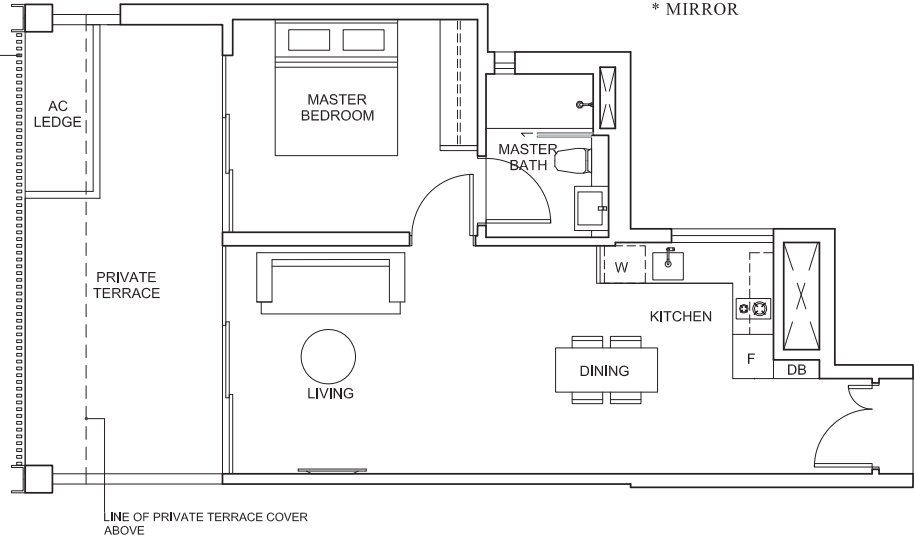
TYPE AP4
64 sq.m. / 689 sq.ft
BLOCK 14
#02-25



TYPE AP5a
68 sq.m. / 732 sq.ft
BLOCK 8
#02-05



TYPE AP5
70 sq.m. / 753 sq.ft
BLOCK 6
#02-03
BLOCK 8
#02-06*
* MIRROR



SIZES, QUANTITIES AND SPACING FOR THE RAILING AS INDICATED ARE FOR ILLUSTRATION ONLY AND MAYBE VARIED IN ACTUAL CONSTRUCTION ACCORDING TO THE ARCHITECT'S DISCRETION AND / OR AS REQUIRED BY RELEVANT AUTHORITIES.

1-BEDROOM SUITE

TYPE A1

46 sq.m. / 495 sq.ft

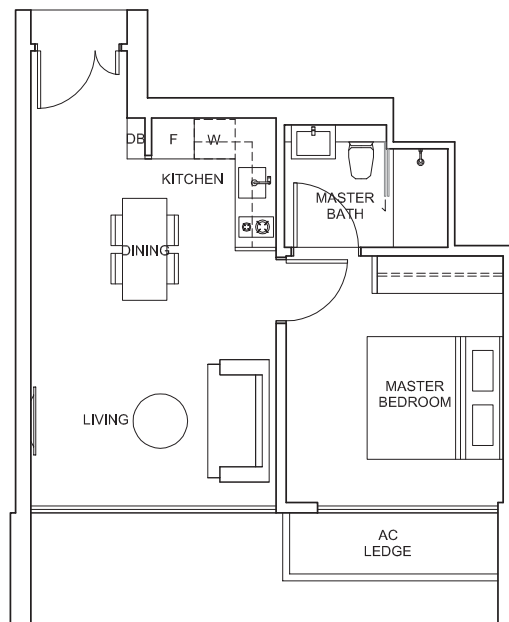
BLOCK 12

#05-20 TO #08-20

BLOCK 14

#12-24* TO #15-24*

* MIRROR



TYPE A2

47 sq.m. / 506 sq.ft

BLOCK 6

#05-03 TO #08-03

BLOCK 8

#12-07* TO #15-07*

* MIRROR

